

Yateley Integrated Care Team (ICT)

A multi-disciplinary team based in Yateley, aiming to support and empower people to maintain independence, to manage multiple health and care conditions locally, and provide wrap around care for people in or close to their own homes.

It is delivered as part of the **Happy, Healthy, at Home Vanguard programme**



Launched in
2015

143
Patients supported
April 16 to May 17


14
new referrals
a month


Supports mostly
older people

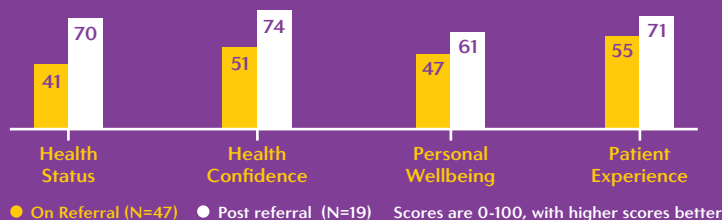

Meets weekly and
works until
all patients have
been discussed


7%
reduction in
A&E attendances


16%
reduction in
emergency admissions


£37,083
Estimated savings per year
(caseload of 143 people)

Patients report improved outcomes in
health status, health confidence, personal
wellbeing and patient experience



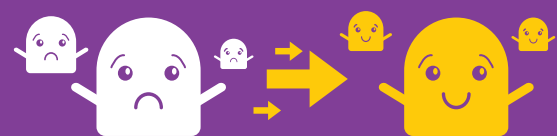
● On Referral (N=47) ● Post referral (N=19) Scores are 0-100, with higher scores better



Team analysis shows positive change -
moving from
“fragmentation” to “integration”

Patient interviews identified 4 themes:*

- **Help-seeking**; patients did not always seek help when they needed it
- **Positive relationships with ICT**; contact and support from the ICT was regarded as positive - patients and carers valued “people who get things done”
- **Carer needs**; Importance of ICT considering carers, and also offering support to carers via the ICT
- **Continuity of care**; mixed views about how well ICT staff communicated together, and lack of weekend care.



Case studies identified a theme:
“Intensive tailored support to move away
from crisis and toward stability”

For more information visit
www.wessexahsn.org.uk or email
enquiries@wessexahsn.net

