

# Dementia: supporting Wessex GP surgeries to improve dementia care

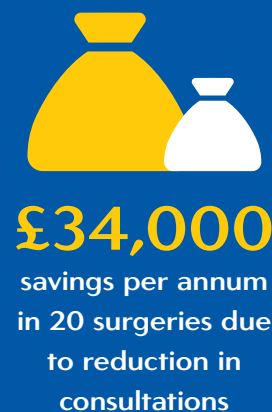
## What was delivered in 2016/17?

- Completion of iSPACE in 54 surgeries
- Implementation of iSPACE in 174 surgeries
- Over 1,000 staff trained in 2016
- 6% reduction in clinical consultations
- 16% increase in diagnosis rates in surgeries implementing iSPACE
- £34,400 savings per annum in 20 surgeries due to reduction in consultations



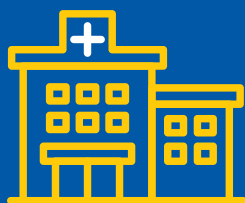
## What's planned for 2017/18?

- Successful handover to Wessex Clinical Commissioning Groups (CCGs) of iSPACE – success measured by take up from CCGs and provider trusts adopting iSPACE as part of standard practice
- To spread to 40% of Wessex GP surgeries by the end of May 2017
- Analysis of data from 40 participating surgeries and demonstrating measures of impact
- Analysis of three focus groups to measure the impact of adoption of iSPACE



174

Implementation of iSPACE  
in 174 surgeries



54

Completion of iSPACE  
in 54 surgeries



16%

increase in diagnosis rates in  
surgeries implementing iSPACE

Toolkit available and find out more:  
All of the resources to make a GP  
surgery Dementia Friendly are all  
available on our website:  
[wessexahsn.org.uk/ispace](http://wessexahsn.org.uk/ispace)



You can also watch videos and  
find out which surgeries near  
you are officially Dementia  
Friendly, or well on the way.